



Rolt Street, SE8 5NN

Immaculately presented Victorian conversion apartment in a quiet residential street in the heart of ever so popular Deptford.
Full of character and recently refurbished with attention to detail, this property truly stands out. The apartment boasts a naturally bright living room featuring bespoke shelving units, wooden flooring, and a working fireplace, a spacious kitchen with plenty of space to dine, the double bedroom, and a stylish bathroom.
Iconic Deptford High Street and market is a short stroll away and the greenery of Folkestone Park, Deptford Park, as well as the River Thames are just moments away.

Service Charge: £200.85
Ground Rent: £10.00
Years on the lease: 95
Council Tax Band: B

Council tax and, where applicable, lease information, service charges and ground rent are given as a guide only and should always be checked and confirmed by your Solicitor prior to exchange of contracts.

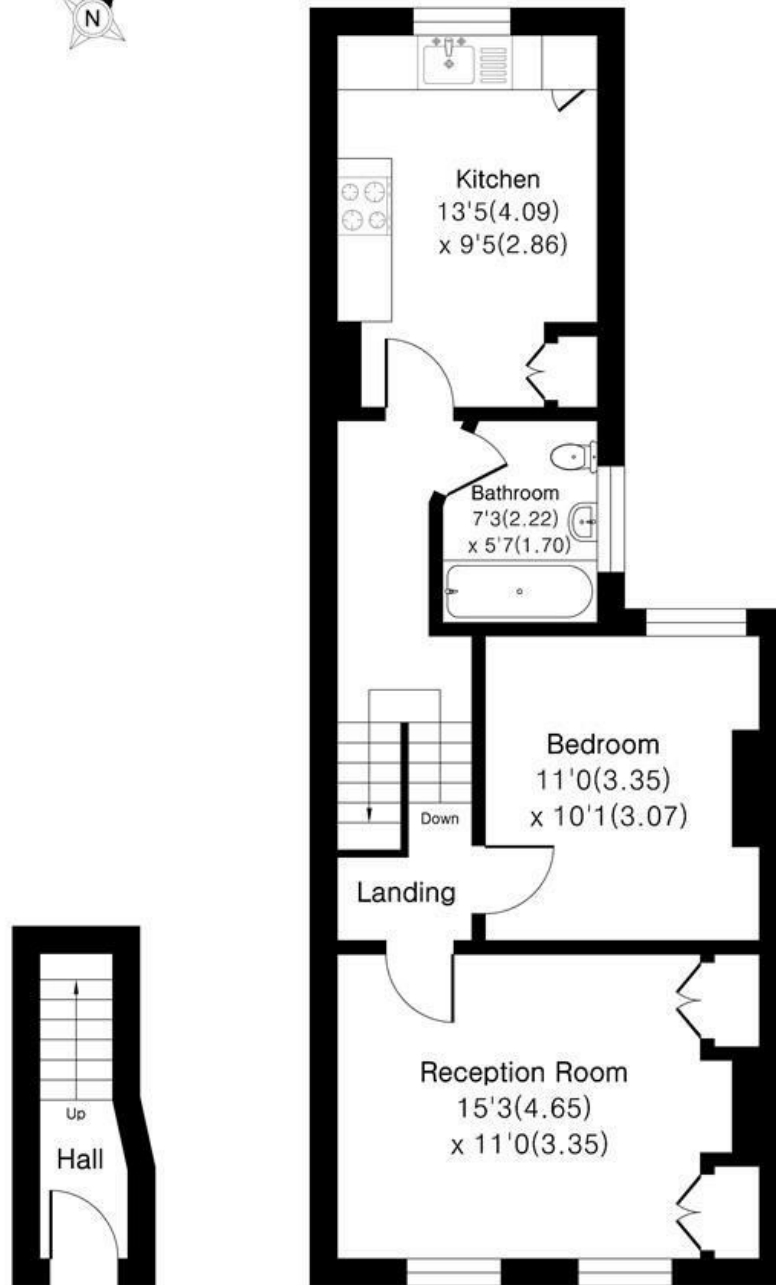
- Victorian Conversion Apartment
- Immaculately Presented
- Refurbished at High-Standards
- Naturally Bright
- Very Low Service Charge
- Tranquil Setting
- Ever So Popular Deptford

Alex & Matteo
ESTATE AGENTS

Offers in excess of £350,000

Rolt Street, SE8

Approximate Area = 575 sq ft / 53.4 sq m



Ground Floor First Floor



Floor plan Produced in accordance with RICS Property Measurement 2nd Edition.
Incorporating International Property Measurement Standards (IPMS2 Residential).
Produced for Alex & Matteo Estate Agents.

Energy Efficiency Rating		
	Current	Potential
Very energy efficient - lower running costs		
(92 plus) A		
(81-91) B		
(69-80) C		
(55-68) D	67	74
(39-54) E		
(21-38) F		
(1-20) G		
Not energy efficient - higher running costs		
England & Wales		
EU Directive 2002/91/EC		